



H 1 4 R

multi-point rod kit

for hinged security doors

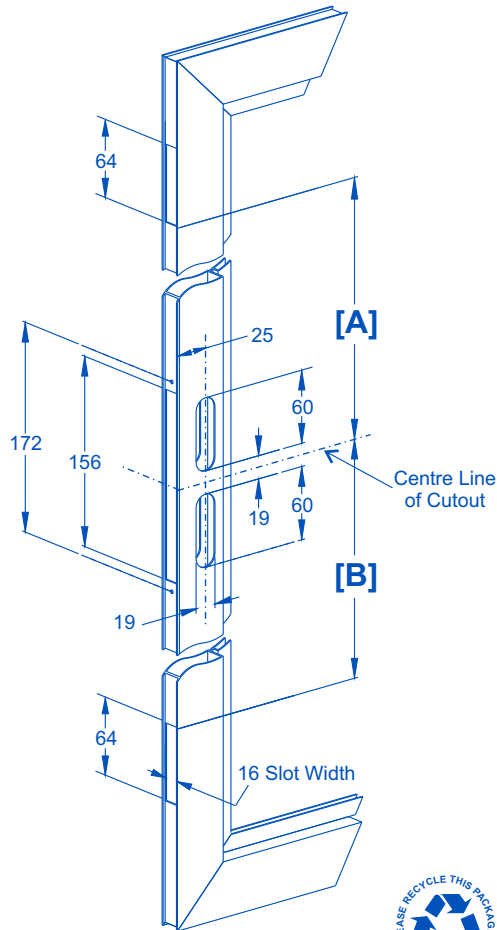
ILLUSTRATED FITTING INSTRUCTIONS

1.

Prepare Door

Prepare the door according to the table and diagram below, to suit the application.

	Code	[A]	[B]
High	H14R/H	682 mm	826 mm
Low	H14R/L	826 mm	682 mm
Suit 1500	H14R/P	375 mm	961 mm
Sample	H14R/S	375 mm	348 mm



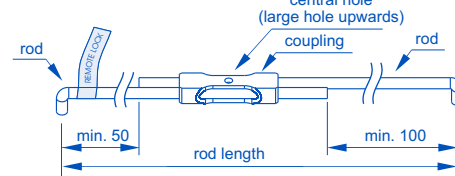
2. (OPTIONAL)

Adjustable Rod Setup

Follow this step if using Adjustable Rods, otherwise go to Step 3.

Mark the cutout dimensions **A** and **B** on the **Measurement Guide** provided.
NOTE: The standard cutout dimensions are pre-marked.

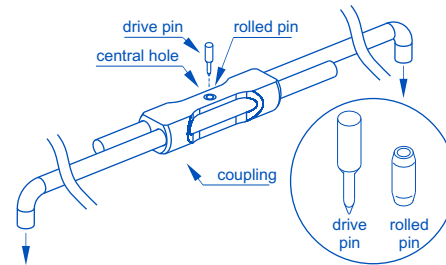
If you are fitting several doors with the same cutout dimensions, it is recommended that you securely tape the **Measurement Guide** to a solid benchtop or hard surface. Then drill holes (4.5mm diameter) to locate and secure the rod ends while fastening.



Adjust the **steel rods** outward until they align with the correct marks on the Measurement Guide. The **coupling** should be spaced in the center between the two **rod ends**, and have the larger **central hole** facing upwards.

NOTE: If the distance between the straight rod end and the bent rod end marked "REMOTE LOCK" (with tape) is less than 50mm (as shown above), you must cut-down the rods enough to provide this clearance. The minimum clearance at the other end is 100mm.

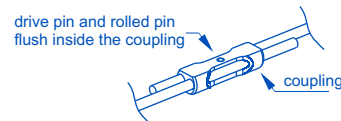
The **rod ends** must be pointing downwards into the benchtop. If you are not drilling holes for the **rod ends**, you will need to place a hard and flat block (10mm thick) under the **coupling**.



CHECK THAT THE ROD ENDS ARE PARALLEL AND POINTING STRAIGHT DOWN.

Re-align if necessary and check the overall length.

Insert the pointed end of the **drive pin** into the **rolled steel pin** (already pressed into the into the large **central hole**) and hammer until it is fully inside the **coupling**.



The Adjustable Rod is now ready for installation.

3.

Install Remote Locks

Rod lengths for each application are given in the table below for reference.

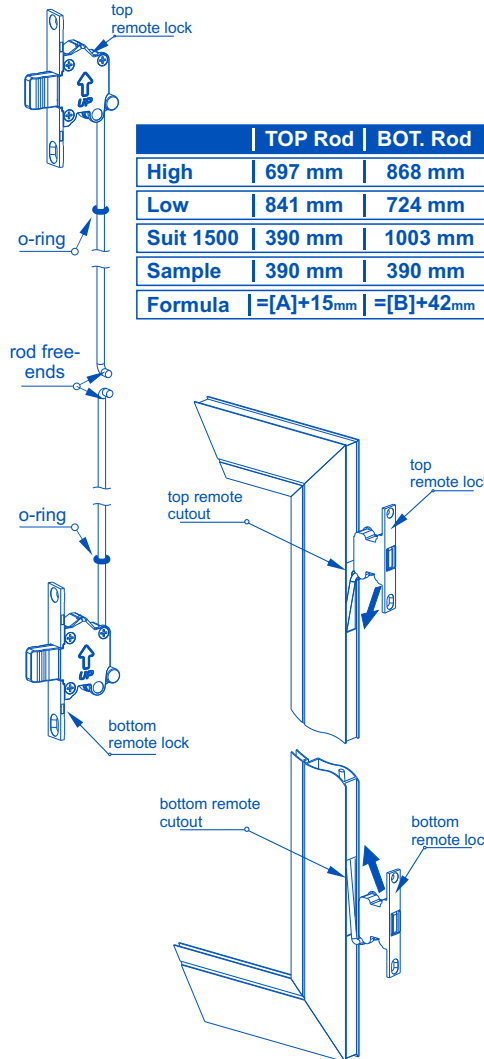
Fit a supplied **o-ring** on each rod 60 - 80mm from the remote end (not needed for Adjustable Rods).

Assemble corresponding **rods** to the **top** and **bottom remote locks**, ensuring the **UP arrows** on the **remote locks** are pointing towards the top of the door.

With the **top remote lock** connected to the **top rod**, slide the **free-end** of the **top rod** through the **top remote lock cutout**.

Repeat the above process for the **bottom remote lock**.

NOTE: DO NOT SCREW THE REMOTE LOCKS IN YET.

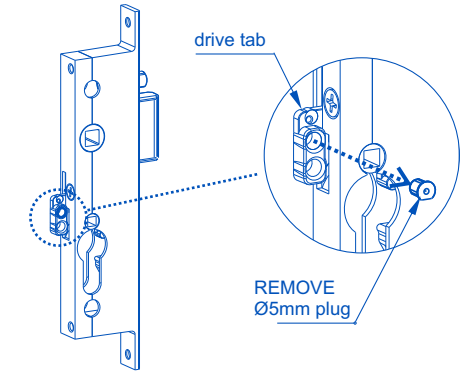


	TOP Rod	BOT. Rod
High	697 mm	868 mm
Low	841 mm	724 mm
Suit 1500	390 mm	1003 mm
Sample	390 mm	390 mm
Formula	$=[A]+15\text{mm}$	$=[B]+42\text{mm}$

4.

Remove Plug in Centrelock

Remove **Ø5mm plug** in the **drive tab** on the rear of the **centrelock** and discard.



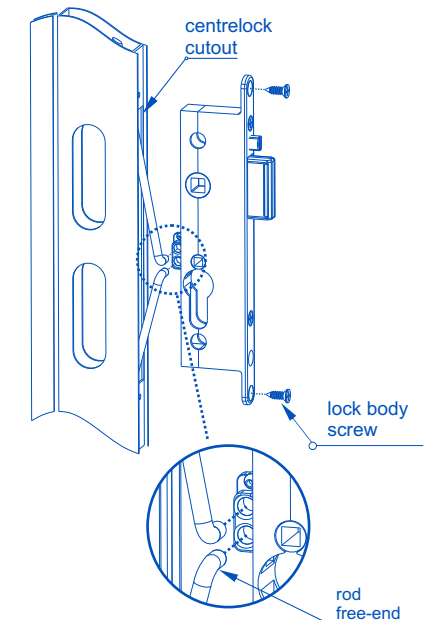
5.

Install Centrelock

Pull the **free-ends** of the **rods** out through the **centrelock cutout**.

Insert the **rod free-ends** into the two **Ø5 drive holes** on the rear of the centrelock.

Insert the centrelock into the **centrelock cutout** and secure with two **#8x13mm lock body screws**.

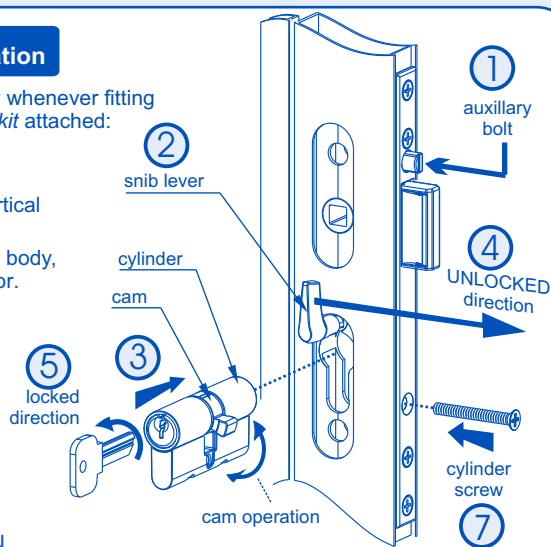


PLEASE TURN PAGE FOR STEPS 6 - 10

6. Cylinder Installation

The directions below must be followed carefully whenever fitting a cylinder to a centrelock with H14R multipoint kit attached:

1. Depress the **auxiliary bolt** to ensure the **main bolt** is fully extended.
2. Insert the **snib lever**. Turn **snib lever** to vertical orientation as shown. - Lock is unlocked.
3. Position the cylinder centrally within the lock body, ensuring cam turns towards front face of door. (see diagram)
4. While applying light pressure on the **snib lever** towards the UNLOCKED position (front face of door),
5. turn the key firmly towards the locked position to engage the **cam**.
6. While turning the key, allow the **snib lever** to move while still applying light pressure.
7. Insert the #10 x 38mm **cylinder screw** and tighten. TEST CYLINDER OPERATION.



7. Adjust Remote-Locks & Fix in Place

While maintaining pressure on the key towards the **UNLOCKED** position, push the top remote lock lightly **UPWARD**.

While holding the remote lock in the upward position, drill a hole in the centre of the slotted fixing hole and install a #8x13mm **remote lock fixing screw**.

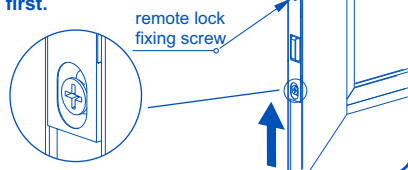
NOTE: Do not drill a hole in the round fixing hole yet.

Repeat the above procedure to fit the Bottom Remote Lock.

Check the operation with the key and snib, ensuring that both the Top & Bottom remote bolts are deadlocked in the locked position and flush with the case in the unlocked position. Adjust if required.

Drill holes through the round fixing holes in the Top & Bottom Remote Locks and install two #8x13mm **remote lock fixing screws**.

NOTE: If removal of the cylinder is required - all remote lock fixing screws must be removed first.



8. Centrelock Furniture Installation

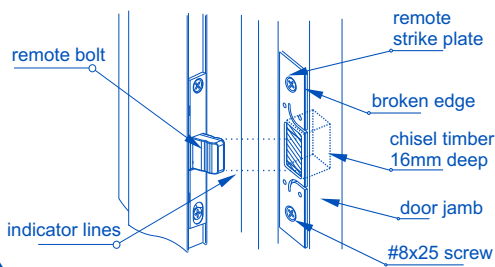
Fit the Austral Centrelock **door furniture** as per instructions supplied with the centrelock.

9. Centrelock Strike Plate Installation

Fit the Austral Centrelock **strike plate** as per instructions supplied with the centrelock.

10. Remote Strike Plate Installation

Fit the **remote strike plates** following the same process used to fit the Centre Lock Strike Plate above. Ensure the **remote strike plates** are orientated as below. The broken edge of the **remote strike plates** must face the exterior of the building.



H14R - CARE & MAINTENANCE

Installation

The product must be installed according to the instructions included in the product packaging and the door should be apertured according to the door "cut-out" dimensions and tolerances shown.

Prior to fitting ensure that:

Doors stored on site are stored in a clean dry area free from cement, lime, paint, acid etc.

During fitting of the lock ensure that :

No metal swarf or other contaminants enter the lock body.

The fixing screws do not damage the product finish.

After installation of the door ensure that:

The door is correctly adjusted with the correct clearances.

The lock engages the catch plate correctly.

The door is protected from building fall-out such as wet plaster, mortar, paint and welding splatter.

If the door becomes contaminated:

Do not paint the lock body or faceplate.

Remove wet plaster, cement, mortar and other droppings immediately, using ample clean water and a sponge or rag, to avoid permanent staining or scratching of the product finish. If removal is delayed and scraping becomes necessary the surface finish may suffer.

Maintenance

Annually inspect the door to confirm that the door operates with the correct clearances, closes and opens without obstruction. Confirm that the lock tongue slides easily up the strike plate wing to freely enter the strike plate aperture when the door is closed - adjust the door if necessary.

Annually check that when the door is closed, the lock can be locked by key and by the snib lever.
NB : The lock assembly has been lubricated for life, and should not be disassembled by the user.

Cleaning Powder Coatings

Every six months, powder coated surfaces should be cleaned to protect the finish. However, in areas where pollutants are more prevalent, especially in coastal or industrial regions, cleaning should be carried out every two to three months.

To clean the powder coated surface:

1. Carefully remove any loose deposits with a wet sponge.
2. Use a soft brush (non abrasive) or cloth and a mild household detergent solution to remove dust, salt and other deposits. Do not use steel wool, scrapers, scouring liquids or powders to remove deposits as these permanently scratch the coating surface.
3. Rinse off with clean fresh water.

Cleaning Chrome, Satin Chrome, Gold and Brass Finishes

Plated finishes are susceptible to tarnishing if they come into contact with moisture, wet paint, or water vapour. All plated finishes should be coated with a non-abrasive furniture or car wax immediately after installation. Plated finishes should be regularly wiped with a non-abrasive furniture or car wax, taking care not to scratch any protective finishes that are employed to protect the surface and prevent tarnishing.

H14R - MAINTENANCE LOG

In order to protect your warranty, record all maintenance activity in the following log:

Address of Building :		
Name of Door :		
Date	Activity	Signed



Austral Lock

PO Box 52
South Melbourne
VIC 3205 Australia

ph (+61 3) 9314 1077
fax (+61 3) 9314 2400

www.ausloc.com