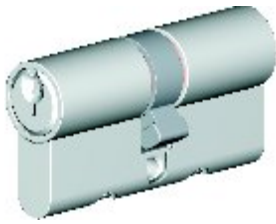
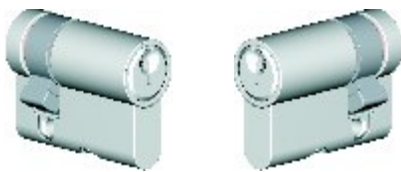




# Sorrento Cylinders

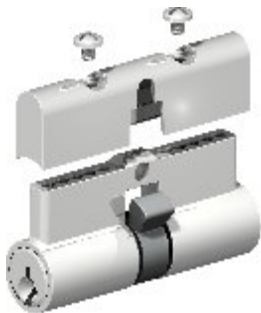


AA70 cylinder



AA35  
Left opening

AA35  
Right opening



Quick re-pinning feature

**Description:** Cylinders for Sorrento and Sorrento Bi-fold door locks. The cylinders have 6 pin chambers but are supplied with 5 pins.

**Special Features:**

- **Quick and easy re-pinning** feature.
- **C4 and G keyways** are available.  
(Lockwood and Gainsborough compatible)
- **Australian** design and manufacture.

**Finish:** Satin Chrome and Bright Gold plated options available.

**AA70 Cylinder:** Austral Lock double cylinder (70mm) for French door and patio doors. Suits Sorrento locks.

**AA35 Cylinder :** Austral Lock single cylinder for bi-fold doors. Suits Sorrento Bi-fold locks only. Single cylinders are handed and must be specified as 'Left Opening' or 'Right Opening'. Refer to Sorrento Bi-fold information in the 'Hinged Glass Door Products' section of this catalogue for specification details.

Ordering Code	Description		Length	Compatible locksets
AA70-5C4SC/ KA or KD	AA70 5-pin double cylinder with C4 keyway	Satin Chrome	70mm	<b>Sorrento</b>
AA70-5GSC/ KA or KD	AA70 5-pin double cylinder with G keyway			
AA70-5C4BG/ KA or KD	AA70 5-pin double cylinder with C4 keyway	Bright Gold	70mm	
AA70-5GBG/ KA or KD	AA70 5-pin double cylinder with G keyway			
AA35/LH-C4SC	AA35 5-pin Left opening cylinder with C4 keyway	Satin Chrome	45mm	<b>Sorrento Bi-fold Left opening</b>
AA35/LH-GSC	AA35 5-pin Left opening cylinder with G keyway			
AA35/RH-C4SC	AA35 5-pin Right opening cylinder with C4 keyway	Satin Chrome	45mm	<b>Sorrento Bi-fold Right opening</b>
AA35/RH-GSC	AA35 5-pin Right opening cylinder with G keyway			