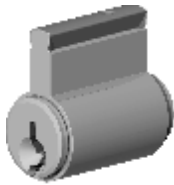
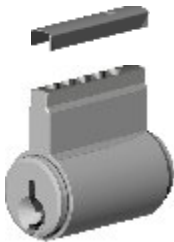




Yarra Single Cylinders



YC 5-pin cylinder



Re-pinning feature

Description: YC Cylinders for sliding glass door locks.

Special Features:

- **Quick and easy re-pinning** feature.
- **Project pinning** capability.
- **Master keying** available.
- **C4 and G keyways** are available.
(Lockwood and Gainsborough compatible)
- **Australian** design and manufacture.

5-Pin Cylinders: Austral 5-pin single cylinders are recommended for the majority of applications. Can be used on all 5-pin inner and outer pulls.

6-Pin Cylinders: Austral 6-pin single cylinders can only be used with 6-pin compatible Yarra Ridge. 6-pin cylinder kits are available (without barrel) for use with restricted keyway barrels.

Wafer Cylinders: Austral Lock wafer cylinders are available for standard inner pulls, standard outer pulls, and low-profile outer pulls.

C4 CYLINDERS

YC-C4B/ KA or KD
Standard 5-pin C4 cylinder

YC-C4A/ KA or KD
5-pin C4 cylinder

YC-C4C/ KA or KD
Premium 5-pin C4 cylinder

G CYLINDERS

YC-GB/ KA or KD
Standard 5-pin G cylinder

YC-GC/ KA or KD
Premium 5-pin G cylinder

6-PIN CYLINDERS

YC-6C4B/ KA or KD
6-pin C4 cylinder

YC-6KIT
6-pin cylinder kit (barrel not included)

WAFER CYLINDERS

YC-WS/ KA or KD
Wafer cylinder (not suitable for low-profile pulls).

YC-WL/ KA or KD
Wafer cylinder for low-profile pulls.

Ordering Code	Description	Notes
YC-C4B/ KA or KD	Standard 5-pin C4 cylinder	5-pin C4 cylinders
YC-C4A/ KA or KD	5-pin C4 cylinder	
YC-C4C/ KA or KD	Premium 5-pin C4 cylinder	
YC-GB/ KA or KD	Standard 5-pin G cylinder	5-pin G cylinders
YC-GC/ KA or KD	Premium 5-pin G cylinder	
YC-6C4B/ KA or KD	6-pin C4 cylinder	6-pin C4 cylinder
YC-6KIT	6-pin cylinder kit for use with 6-pin restricted barrels (barrel not included)	Restricted 6-pin Kit
YC-WS/ KA or KD	Wafer cylinder (not suitable for low-profile outer pulls)	Wafer cylinders
YC-WL/ KA or KD	Low-profile wafer cylinder (suitable for low-profile outer pulls)	